



Oldebjerg Trading ApS
Industrivej 2
DK-4180 Sorø

Order no. 770248-2
Page 1 of 3
Appendices
Initials UHI/SCL

Test Report

- Material:** 1 unit off Oldebjerg grating 319x277 mm, type OT 222214.634, class D400 were submitted for testing. The material of the channel is iron.
- Sampling:** Oldebjerg has produced the grating, see also the drawing at page 2.
- Method:** The Oldebjerg grating were submitted for testing in accordance with DS/EN 124-1:2015, clause 8.2 and 8.3, Permanent set and maximum load.
- Period:** The testing was carried out 22th of August 2017, see the pictures from the test at page 3.
- Result:** Procedure load-test: The unit was placed into a calibrated compressive test machine calibrated in accordance with ISO7500-1:2004. The loads were then applied hydraulically through a test block.

The cover has been tested to 400 kN:

| Name | Class and Applied Load (kN) | Permanent set, 2/3 of 400 kN, (mm) | Permissible permanent set (mm) |
|---|-----------------------------|------------------------------------|--------------------------------|
| Oldebjerg grating, type - OT 222214.634 | D 400 | 0,8 mm | 1,0 |

The unit showed no failure at 400 kN that might influence the load bearing capacity of the unit.

Conclusion: The Oldebjerg grating, type OT 222214.634 has passed the load bearing requirements in DS/EN 124-1:2015, clause 8.2 and 8.3 for covers.

- Storage:** The sample will be destroyed after 1 month if nothing else has been agreed in writing.
- Terms:** The test has been performed according to the rear side conditions, which are according to the guidelines laid down by DANAK (The Danish Accreditation). The testing is only valid for the tested specimen.
The test report may only be extracted, if the laboratory has approved the extract.

28th of August 2017, Danish Technological Institute, Pipe Centre, Taastrup

Test responsible
Stig Clausen

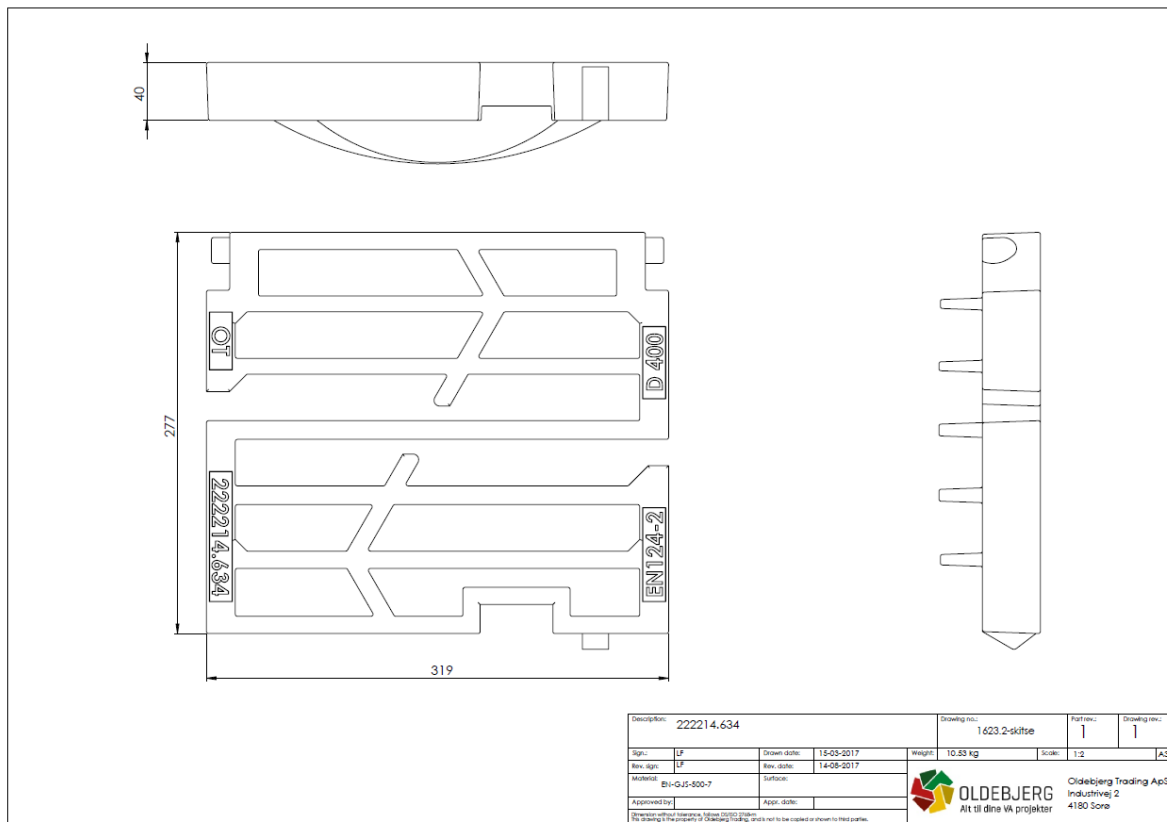
Co-signatory
Ulrik Hindsberger



Journal./report no. 770248-2
Page 2 of 3
Initials UHI & SCL

**DANISH
TECHNOLOGICAL
INSTITUTE**

Drawing and pictures of the product





Pictures from the test

